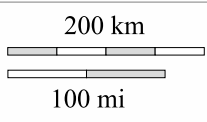
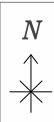


○→■ Mercator



© d-maps.com

Democratic Republic of the Congo

Cabinda

M'banza-Kongo

Uíge

○ **Luanda**

N'dalatando

Malanje

Saurimo

Gabela

• Sumbe

• Lobito

• **Benguela**

Camacupa

Kuito

Huambo

Caála

Lubango

• Namibe

Tômboa

• Menongue

Zambia

Namibia